

WAKV6790
 ○ 84 l m²
 mat | matt
 bílošedá | white-grey



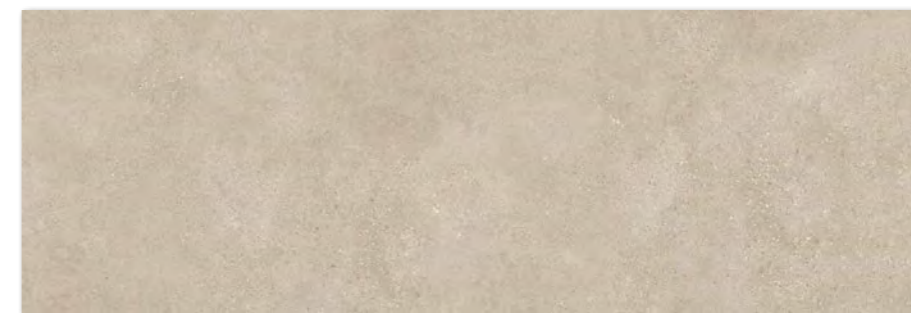
WAKV6791
 ○ 84 l m²
 mat | matt
 šedá | grey



WAKV6792
 ○ 84 l m²
 mat | matt
 černá | black



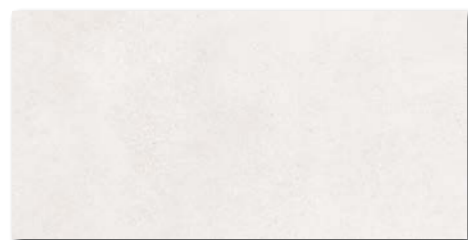
WAKV6793
 ○ 84 l m²
 mat | matt
 světle béžová | light beige



WAKV6794
 ○ 84 l m²
 mat | matt
 tmavě béžová | dark beige



30×60



WADV790
○ 76 | m²
mat | matt | **V3**
bílošedá | white-grey

WAKVK790
○ 78 | m²
mat | matt | **V3** |

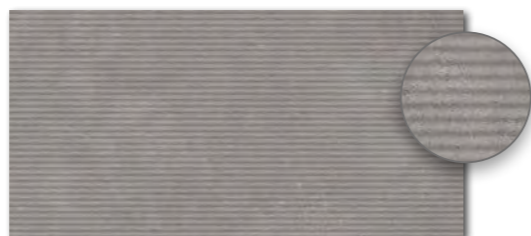


WARVK790
○ 84 | m²
mat | matt | **V3**
bílošedá | white-grey



WADV791
○ 76 | m²
mat | matt | **V3**
šedá | grey

WAKVK791
○ 78 | m²
mat | matt | **V3** |

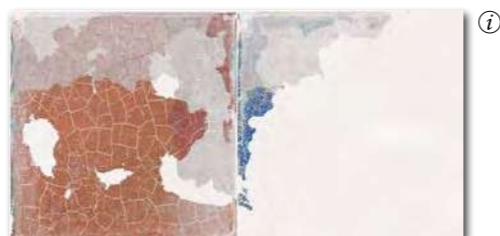


WARVK791
○ 84 | m²
mat | matt | **V3**
šedá | grey

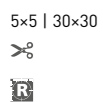


WADV792
○ 76 | m²
mat | matt | **V3**
černá | black

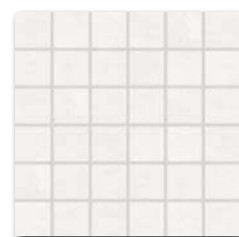
WAKVK792
○ 78 | m²
mat | matt | **V3** |



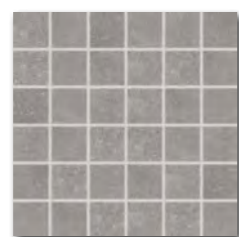
WAKVK796
○ 86 | m²
mat | matt | **V4** |
vícebarevná | multicoloured



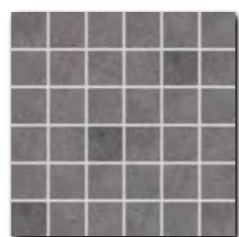
5×5 | 30×30



WDM05790 (SET)
○ 66 | set
mat | matt | **V3**
bílošedá | white-grey



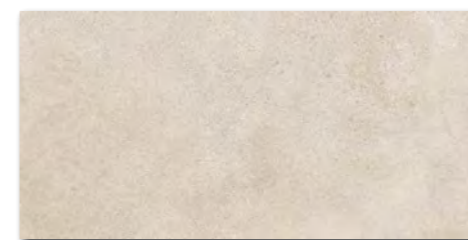
WDM05791 (SET)
○ 66 | set
mat | matt | **V3**
šedá | grey



WDM05792 (SET)
○ 66 | set
mat | matt | **V3**
černá | black

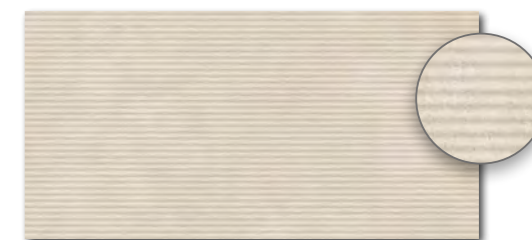


WDM05796 (SET)
○ 66 | set
mat | matt | **V4**
vícebarevná | multicoloured



WADV793
○ 76 | m²
mat | matt | **V3**
světle béžová | light beige

WAKVK793
○ 78 | m²
mat | matt | **V3** |



WARVK793
○ 84 | m²
mat | matt | **V3**
světle béžová | light beige



WADV794
○ 76 | m²
mat | matt | **V3**
tmavě béžová | dark beige

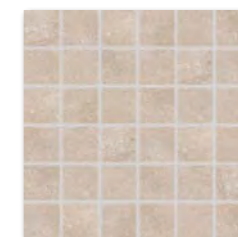
WAKVK794
○ 78 | m²
mat | matt | **V3** |



WAKVK797
○ 86 | m²
mat | matt | **V4** |
vícebarevná | multicoloured



WDM05793 (SET)
○ 66 | set
mat | matt | **V3**
světle béžová | light beige



WDM05794 (SET)
○ 66 | set
mat | matt | **V3**
světle béžová | light beige



WDM05797 (SET)
○ 66 | set
mat | matt | **V4**
vícebarevná | multicoloured

výrobek | product



EN

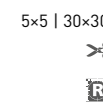


obkládačka wall tile	30×60	298×598×8	EN 14411 - L BIII	8	5,56	1,44	40	57,60	21,3	14,8	876
mozaika set 30×30 cm mosaic sheet 30×30 cm	5×5	48×48×8	STO č. 030 - 059826	4	11	0,36	-	-	5,2	14,8	-

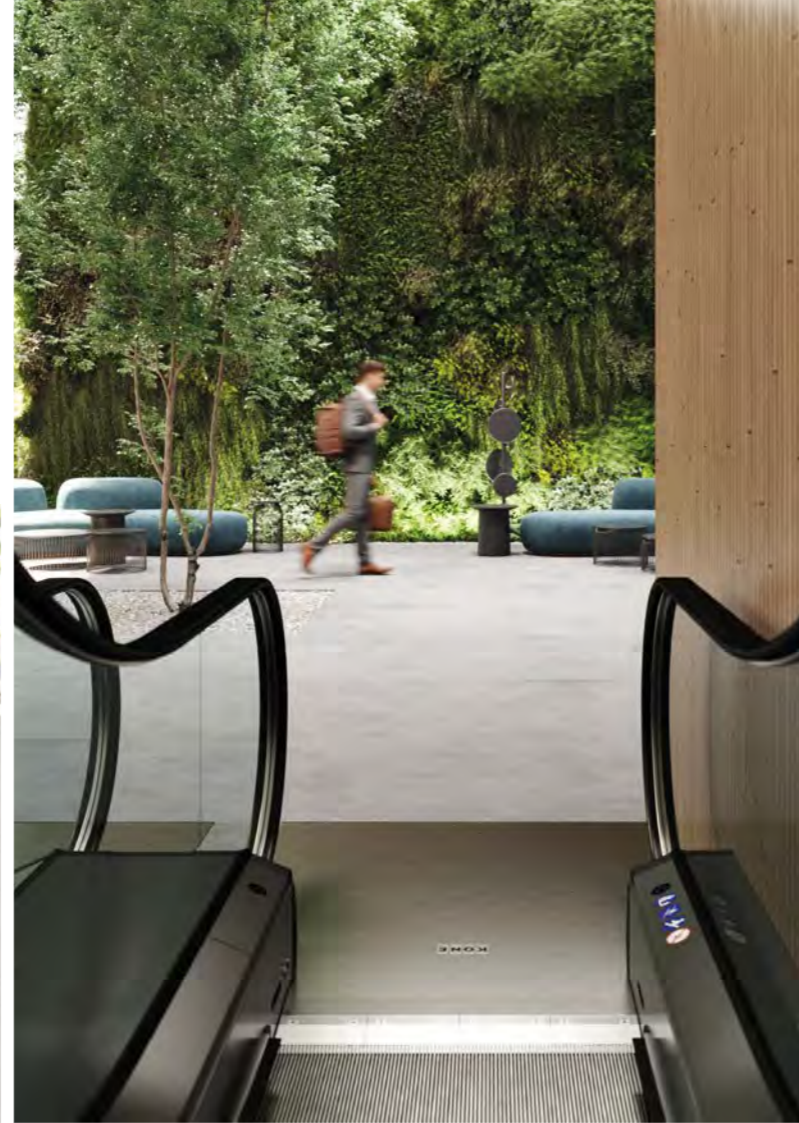
ⓘ Balení výrobku obsahuje nahodilý mix designů. | The products are deliberately mixed in packing to include a random selection of designs.

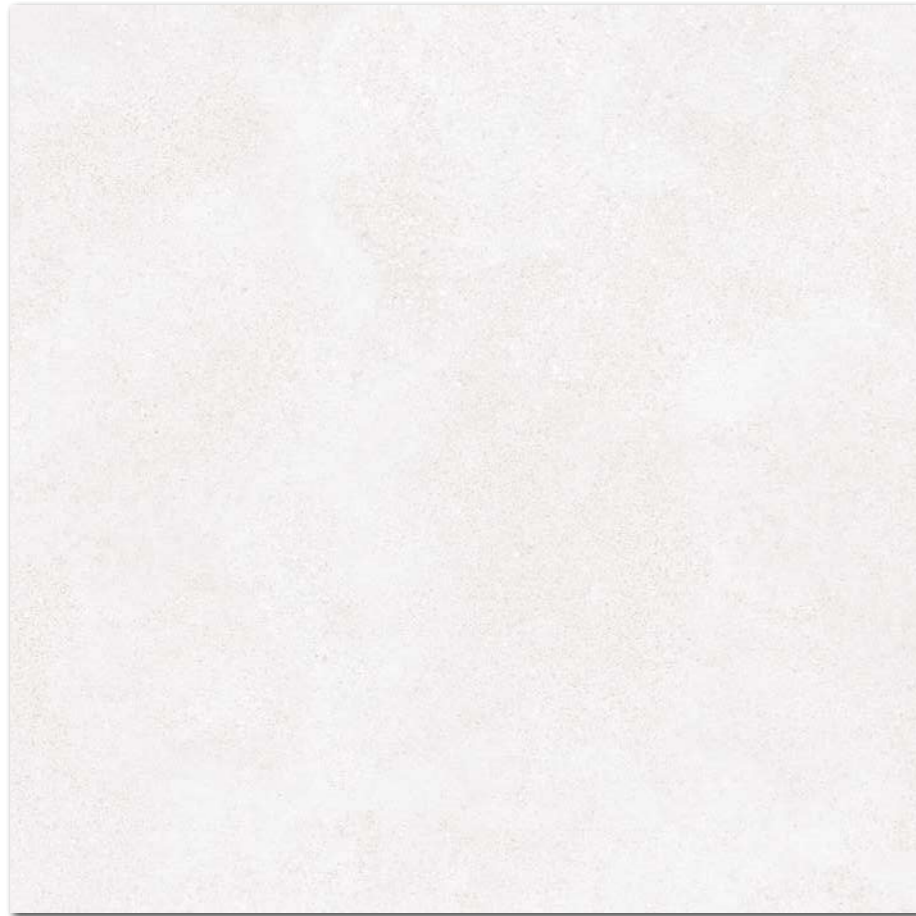
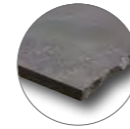


30×60



5×5 | 30×30





DAK92790
PEI 5 ○ 102 l m²
mat | matt
bílošedá | white-grey



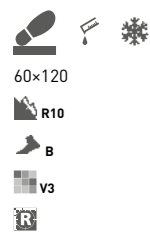
DAK92793
PEI 5 ○ 102 l m²
mat | matt
světle béžová | light beige



DAK92791
PEI 4 ○ 102 l m²
mat | matt
šedá | grey



DAK92792
PEI 4 ○ 102 l m²
mat | matt
černá | black



DAKV1790
PEI 5 ○ 87 | m²
mat | matt

bílošedá | white-grey



DAKV1793
PEI 5 ○ 87 | m²
mat | matt

světle béžová | light beige



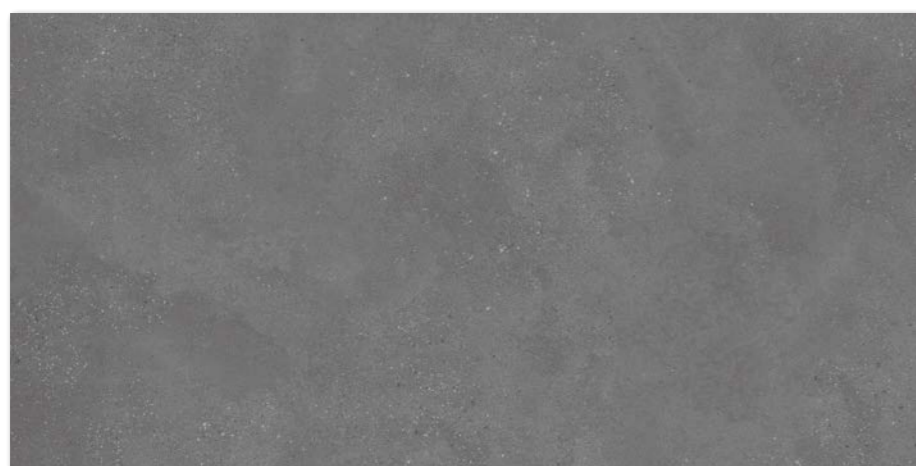
DAKV1791
PEI 4 ○ 87 | m²
mat | matt

šedá | grey



DAKV1794
PEI 4 ○ 87 | m²
mat | matt

tmavě béžová | dark beige



DAKV1792
PEI 4 ○ 87 | m²
mat | matt

černá | black

výrobek | product

cm	mm	EN		ks/m ²	m ²	kg	kg/m ²	ks/m ²	kg
120x120	1198x1198x8,5	EN 14411 - G Bla	2	0,7	2,88	18	51,84	57,6	20
60x120	598x1198x10	EN 14411 - G Bla	2	1,4	1,44	27	38,88	32,7	22,7

dlaždice | floor tile
dlaždice | floor tile

120x120
60x120

1198x1198x8,5
598x1198x10

EN 14411 - G Bla
EN 14411 - G Bla

2

0,7

2,88

18

51,84

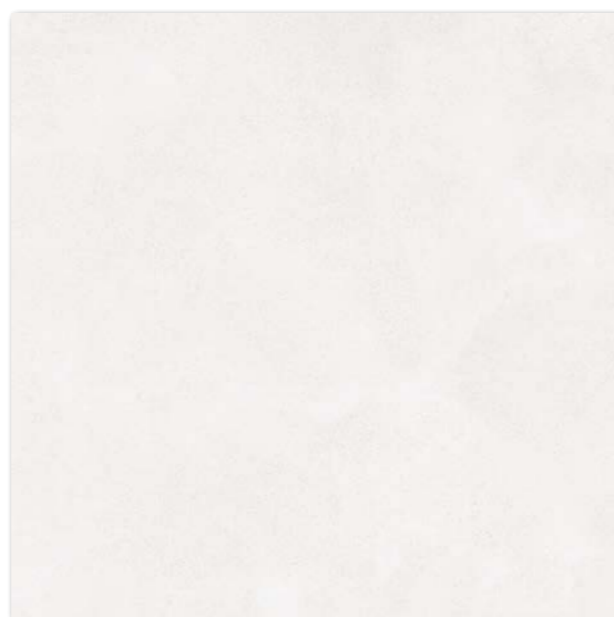
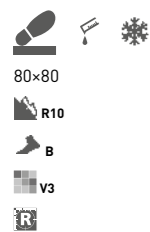
57,6

20

1077

908

ⓘ Dlaždice 120 x 120 cm jsou zabaleny na dřevěné paletě se stranovou nástavbou (122 x 143 x 70 cm) zafixované plastovou páskou a obalené plastovou fólií - viz str. 495. I Floor tiles 120 x 120 cm are packed on a wooden pallet with sides (122 x 143 x 70 cm), fixed with plastic tapes and protected with plastic foil see page 495.



DAK81790
PEI 5 ○ 83 | m²
mat | matt

bilošedá | white-grey



DAK81791
PEI 4 ○ 83 | m²
mat | matt

šedá | grey



DAK81792
PEI 4 ○ 83 | m²
mat | matt

černá | black



DAK81793
PEI 5 ○ 83 | m²
mat | matt

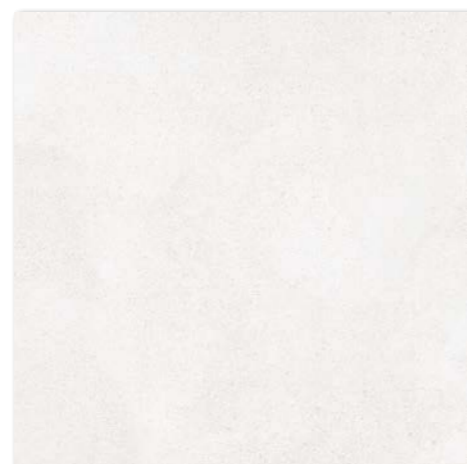
světle béžová | light beige



DAK81794
PEI 4 ○ 83 | m²
mat | matt

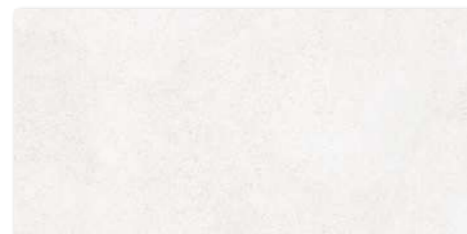
tmavě béžová | dark beige





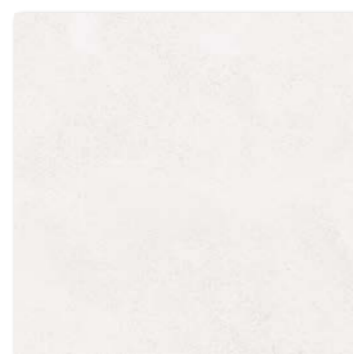
DAK63790
PEI 5 \bigcirc 82 | m²
mat | matt | **R10** | **B**

DAF63790
PEI 5 \bigcirc 84 | m²
mat | matt | **R11** | **B**



DAKSE790
PEI 5 \bigcirc 82 | m²
mat | matt | **R10** | **B**

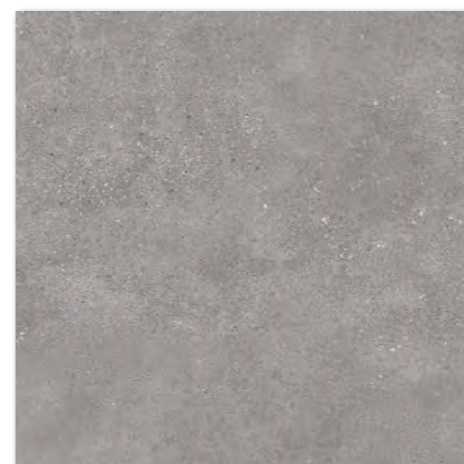
DAFSE790
PEI 5 \bigcirc 84 | m²
mat | matt | **R11** | **B**



DAA4H790
PEI 5 \bigcirc 76 | m²
mat | matt



DDVP4790 (SET)
PEI 5 \bigcirc 76 | set
mat | matt
bílá | white-grey



DAK63791
PEI 4 \bigcirc 82 | m²
mat | matt | **R10** | **B**

DAF63791
PEI 4 \bigcirc 84 | m²
mat | matt | **R11** | **B**



DAKSE791
PEI 4 \bigcirc 82 | m²
mat | matt | **R10** | **B**

DAFSE791
PEI 4 \bigcirc 84 | m²
mat | matt | **R11** | **B**



DAA4H791
PEI 4 \bigcirc 76 | m²
mat | matt



DDVP4791 (SET)
PEI 4 \bigcirc 76 | set
mat | matt
šedá | grey



DAK63792
PEI 4 \bigcirc 82 | m²
mat | matt | **R10** | **B**

DAF63792
PEI 4 \bigcirc 84 | m²
mat | matt | **R11** | **B**

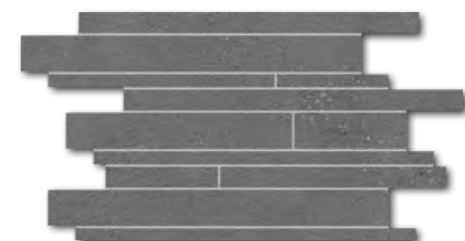


DAKSE792
PEI 4 \bigcirc 82 | m²
mat | matt | **R10** | **B**

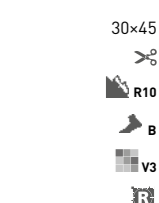
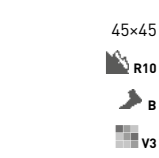
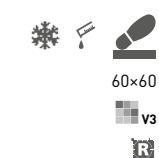
DAFSE792
PEI 4 \bigcirc 84 | m²
mat | matt | **R11** | **B**



DAA4H792
PEI 4 \bigcirc 76 | m²
mat | matt



DDVP4792 (SET)
PEI 4 \bigcirc 76 | set
mat | matt
černá | black



výrobek product	cm	mm	EN	ks/m ²	ks/m ²	ks/m ²	ks/m ²	ks/m ²	ks/m ²	ks/m ²	ks/m ²
dlaždice floor tile	60x60	598x598x10	EN 14411 - G B1a	3	2,8	1,08	32	34,56	23,7	21,9	782
dlaždice floor tile	30x60	298x598x10	EN 14411 - G B1a	6	5,6	1,08	40	43,20	23,7	21,9	971
dlaždice floor tile	45x45	448x448x8	EN 14411 - G B1a	6	5	1,21	34	41,14	21,1	17,4	741
dekor (set) decor (sheet)	30x45	298x445x8	EN 14411 - G B1a	5	7,4	0,68	36	-	11,5	17,4	-

Doporučené skladby formátů viz str. 500-501. | Recommended combinations of modular sizes see pages 500-501.



Všechny výrobky celé série vykazují velké odchylky odstínové diference V3|V4. | All products of the entire batch show big deviations in shade difference V3|V4.

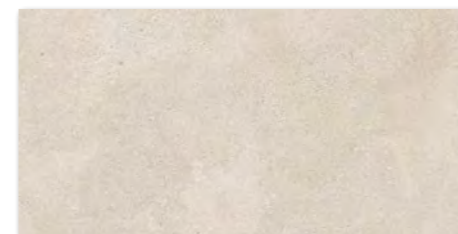
Před pokládkou doporučujeme jednotlivé obkladové prvky vybírat z několika kartonů a výslednou plochu komponovat podle inspirativní fotodokumentace z katalogů RAKO případně z webových stránek www.rako.cz. Žádoucí je kombinace všech jednotlivých designů obkladových prvků včetně jejich natáčení o 90° nebo 180° tak, aby bylo dosaženo vyváženého vzhledu obkládané plochy.

Before laying the tiles, we suggest you select from several cartons and arrange them as illustrated in the inspiration photo documentation in RAKO catalogues or website www.rako.eu, and mix the tiles to achieve the required result including turning them by 90° or 180°.



DAK63793
PEI 5 \odot 82 | m²
mat | matt | R10 | B

DAF63793
PEI 5 \odot 84 | m²
mat | matt | R11 | B



DAKSE793
PEI 5 \odot 82 | m²
mat | matt | R10 | B

DAFSE793
PEI 5 \odot 84 | m²
mat | matt | R11 | B

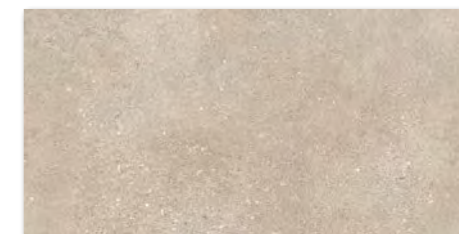


DAA4H793
PEI 5 \odot 76 | m²
mat | matt



DAK63794
PEI 4 \odot 82 | m²
mat | matt | R10 | B

DAF63794
PEI 4 \odot 84 | m²
mat | matt | R11 | B



DAKSE794
PEI 4 \odot 82 | m²
mat | matt | R10 | B

DAFSE794
PEI 4 \odot 84 | m²
mat | matt | R11 | B



DAA4H794
PEI 4 \odot 76 | m²
mat | matt



DDVP4793
PEI 5 \odot 76 | set
mat | matt

(SET)

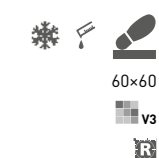
světle béžová | light beige



DDVP4794
PEI 4 \odot 76 | set
mat | matt

(SET)

tmavě béžová | dark beige



60x60
V3
R

30x60
V3
R

45x45
R10
B
V3

RAKO Home

30x45
R10
B
V3
R

výrobek product	cm	mm	EN	ks/m ²	ks/m ²	ks/m ²	ks/m ²	ks/m ²	ks/m ²	ks/m ²	ks/m ²
diaždice floor tile	60x60	598x598x10	EN 14411 - G Bla	3	2,8	1,08	32	34,56	23,7	21,9	782
diaždice floor tile	30x60	298x598x10	EN 14411 - G Bla	6	5,6	1,08	40	43,20	23,7	21,9	971
diaždice floor tile	45x45	448x448x8	EN 14411 - G Bla	6	5	1,21	34	41,14	21,1	17,4	741
dekor (set) decor (sheet)	30x45	298x445x8	EN 14411 - G Bla	5	7,4	0,68	36	-	11,5	17,4	-

Doporučené skladby formátů viz str. 500-501. | Recommended combinations of modular sizes see pages 500-501.



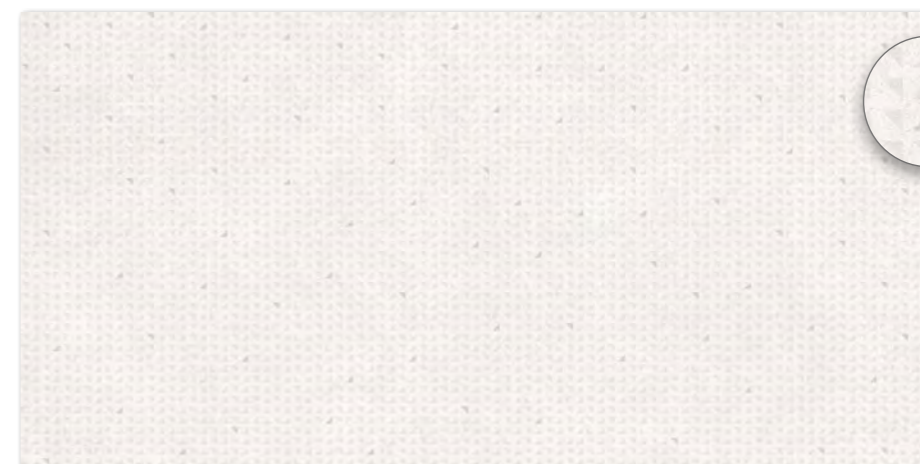
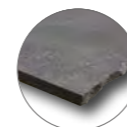
DAK63795
PEI 5 \odot 88 | m²
mat | matt | \square V4
bílášedá | white-grey



DAK63796
PEI 4 \odot 88 | m²
mat | matt | \square V4
šedá | grey



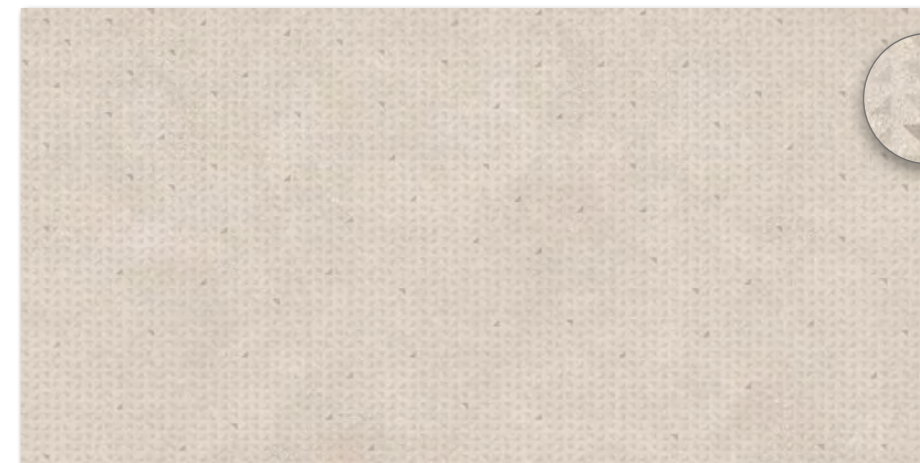
DAK63797
PEI 5 \odot 88 | m²
mat | matt | \square V4
běžová | beige



DAKV1795
PEI 5 \odot 90 | m²
mat | matt | \square V3
bílášedá | white-grey



DAKV1796
PEI 4 \odot 90 | m²
mat | matt | \square V3
šedá | grey



DAKV1797
PEI 5 \odot 90 | m²
mat | matt | \square V3
běžová | beige



výrobek | product



dlaždice | floor tile
dlaždice | floor tile

60-60
60-120

598-598-10
598-1198-10

EN 14411 - G Bla
EN 14411 - G Bla

3
2

2,8
1,4

1,08
1,44

32
27

34,56
38,88

23,7
32,7

21,9
22,7

782
908



10x10



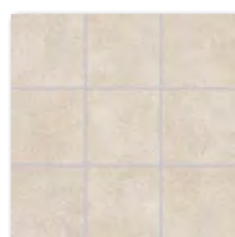
DAK12790 [SET]
PEI 5 \odot 94 | m²
mat | matt
bílá | white-grey



DAK12791 [SET]
PEI 4 \odot 94 | m²
mat | matt
šedá | grey



DAK12792 [SET]
PEI 4 \odot 94 | m²
mat | matt
černá | black

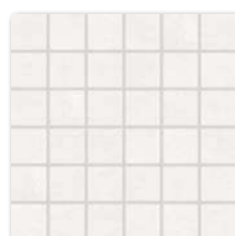


DAK12793 [SET]
PEI 5 \odot 94 | m²
mat | matt
světle béžová | light beige

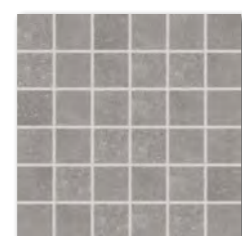


DAK12794 [SET]
PEI 4 \odot 94 | m²
mat | matt
tmavě béžová | dark beige

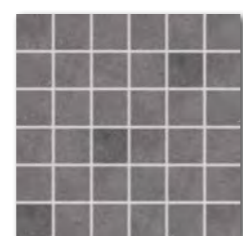
5x5 | 30x30



DDM06790 [SET]
PEI 5 \odot 72 | set
mat | matt
bílá | white-grey



DDM06791 [SET]
PEI 4 \odot 72 | set
mat | matt
šedá | grey



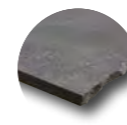
DDM06792 [SET]
PEI 4 \odot 72 | set
mat | matt
černá | black



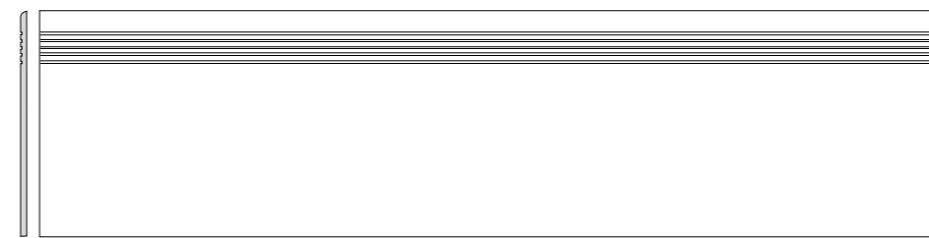
DDM06793 [SET]
PEI 5 \odot 72 | set
mat | matt
světle béžová | light beige



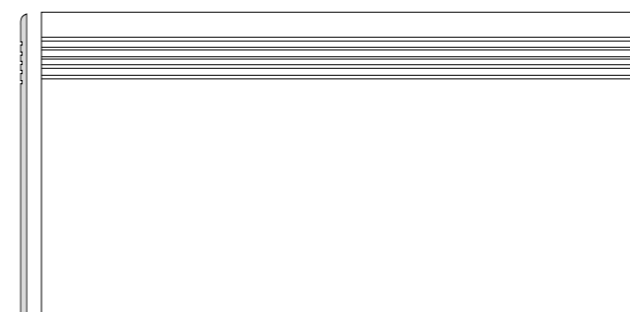
DDM06794 [SET]
PEI 4 \odot 72 | set
mat | matt
tmavě béžová | dark beige



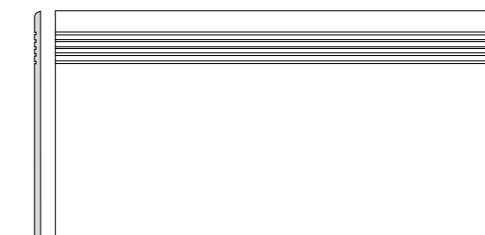
30x120



DCPVF790 bílošedá | white-grey
DCPVF791 šedá | grey
DCPVF792 černá | black
DCPVF793 světle béžová | light beige
DCPVF794 tmavě béžová | dark beige
PEI 4-5 \odot 86 | ks
mat | matt



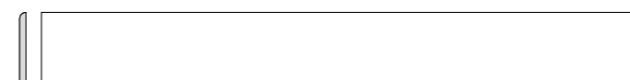
DCP84790 bílošedá | white-grey
DCP84791 šedá | grey
DCP84792 černá | black
DCP84793 světle béžová | light beige
DCP84794 tmavě béžová | dark beige
PEI 4-5 \odot 78 | ks
mat | matt



DCPSE790 bílošedá | white-grey
DCPSE791 šedá | grey
DCPSE792 černá | black
DCPSE793 světle béžová | light beige
DCPSE794 tmavě béžová | dark beige
PEI 4-5 \odot 72 | ks
mat | matt



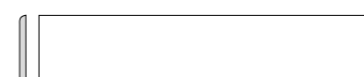
DSA97790 bílošedá | white-grey
DSA97791 šedá | grey
DSA97792 černá | black
DSA97793 světle béžová | light beige
DSA97794 tmavě béžová | dark beige
 \odot 84 | ks
mat | matt



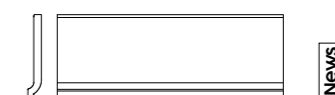
DSA89790 bílošedá | white-grey
DSA89791 šedá | grey
DSA89792 černá | black
DSA89793 světle béžová | light beige
DSA89794 tmavě béžová | dark beige
 \odot 72 | ks
mat | matt



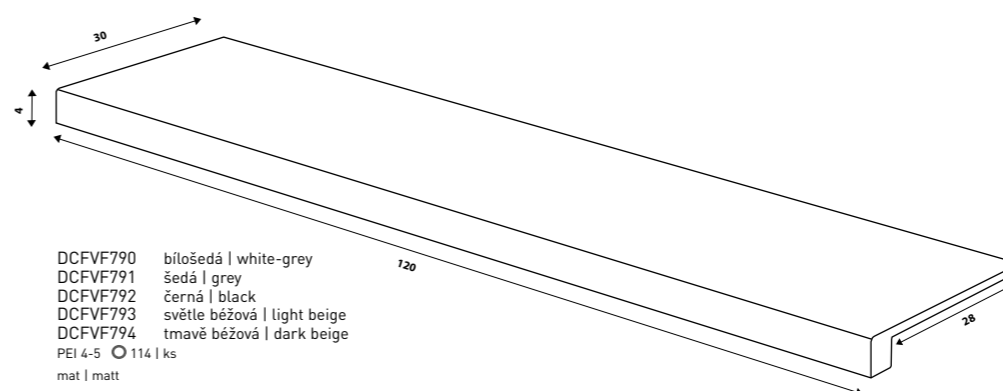
DSAS4790 bílošedá | white-grey
DSAS4791 šedá | grey
DSAS4792 černá | black
DSAS4793 světle béžová | light beige
DSAS4794 tmavě béžová | dark beige
 \odot 56 | ks
mat | matt



DSAPS790 bílošedá | white-grey
DSAPS791 šedá | grey
DSAPS792 černá | black
DSAPS793 světle béžová | light beige
DSAPS794 tmavě béžová | dark beige
 \odot 54 | ks
mat | matt



DSPJT790 bílošedá | white-grey
DSPJT791 šedá | grey
DSPJT792 černá | black
DSPJT793 světle béžová | light beige
DSPJT794 tmavě béžová | dark beige
 \odot 56 | ks
mat | matt



DCFVF790 bílošedá | white-grey
DCFVF791 šedá | grey
DCFVF792 černá | black
DCFVF793 světle béžová | light beige
DCFVF794 tmavě béžová | dark beige
PEI 4-5 \odot 114 | ks
mat | matt

výrobek | product



výrobek product	cm	mm	EN	ks/m ²	m ²	m ³	kg	kg/m ²	kg	kg/m ²
dlaždice floor tile	10x10	98x98x10	EN 14411 - G Bia	10	11	0,91	56	50,96	19,9	21,9
mozaika set 30x30 cm mosaic sheet 30x30 cm	5x5	48x48x10	EN 14411 - G Bia	3	11	0,27	-	-	5,9	21,9
schodovka step tile	30x120	298x1198x10	STO č. 030 - 059824	3/5	2,8	1,08/1,8	-	-	24,6/40,9	22,7
schodovka step tile	40x80	398x798x10	STO č. 030 - 059824	2	3,1	0,64	-	-	14,1	21,9
schodovka step tile	30x60	298x598x10	STO č. 030 - 059824	6	5,6	1,08	40	-	23,7	21,9
sohl skirting plinth	120x7	1198x70x10	STO č. 030 - 059824	10	11,9	0,84	-	-	19,1	22,7
sohl skirting plinth	80x9,5	798x95x10	STO č. 030 - 059824	10	13,2	0,76	-	-	16,7	21,9
sohl skirting plinth	60x9,5	598x95x10	STO č. 030 - 059824	13	17,5	0,74	-	-	16,2	21,9
sohl skirting plinth	45x8,5	448x85x8	STO č. 030 - 059824	25	26,1	0,96	-	-	16,7	17,4
sohl s pažábkem cove skirting	30x11	298x110x8	STO č. 030 - 059824	35	30	1,17	-	-	19,3	16,5
schodová tvarovka special step tile	30x120	298x1198x10	STO č. 030 - 059824	2	-	-	-	-	-	-

120x7



80x9,5
60x9,5



45x8,5
30x11



30x120

